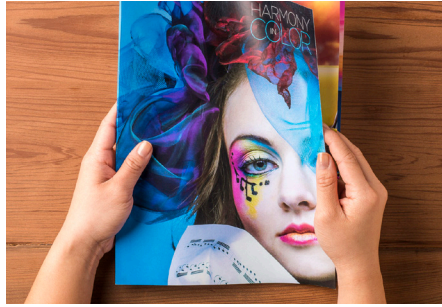


# Xerox® SquareFold® Trimmer Module

Expand your Xerox® production family with finishing options to produce a more professional look.



The SquareFold Trimmer Module enhances the power of your finisher with highly desired features, such as square folding and face trimming to produce high-value brochures and booklets. This standalone module can be added on to many of our production presses, providing greater finishing versatility and increased productivity.

## FEATURES

- Inline square fold and face trim
- SquareFold Trimmer Module attaches neatly to the end of the optional booklet maker finisher
- Easy setup from print server or printer user interface allows the user to control the amount of trim and thickness of the square fold
- Inline face trimming eliminates paper shingling at the fore edge of booklets
- Accurate face trim settings yield sharp, crisp results

- Booklets can be opened flat without damaging the spine
- Creasing roller technology creases the cover and innermost sheets of the booklet, minimizing image cracking on the fold line
- Write and image on the square fold spine

## BENEFITS

- Gives documents a more professional, finished look
- Produce professional square fold booklets quickly and easily
- Flat booklets are easy to handle, stack, pack, move and store
- Accepts booklets up to 25 folded sheets (or 100 imposed pages) directly from the finisher
- Ideal for inline production of a wide range of applications, such as brochures, catalogues, calendars, photo books, educational and training materials and more

## SPECIFICATIONS

### Power Requirements

- 100 – 240 VAC
- 60/50 Hz
- kVA Rating: 0.1 kVA

### Dimensions

- 1,066.3 mm width
- 723.9 mm depth
- 558.8 mm height

### Weight

- 95 kg

### Paper Types

- Coated and uncoated

### Paper Weights

- 52 – 350 gsm, dependent on printer

### Paper Size (min/max)

- 216 x 279 mm — minimum
- 330 x 457 — maximum

### Trim Capacity (min/max)

- 5 – 20-sheet booklet (up to 80 imaged sides) at 90 gsm
- 5 – 25-sheet booklet (up to 100 imaged sides) at 80 gsm

### Cut Amount

- 2 – 20 mm, adjustable in 0.1 mm increments

For more information on the Xerox® SquareFold Trimmer Module, contact your Xerox representative, call 1-800-ASK-XEROX or visit us at [www.xerox.com](http://www.xerox.com).